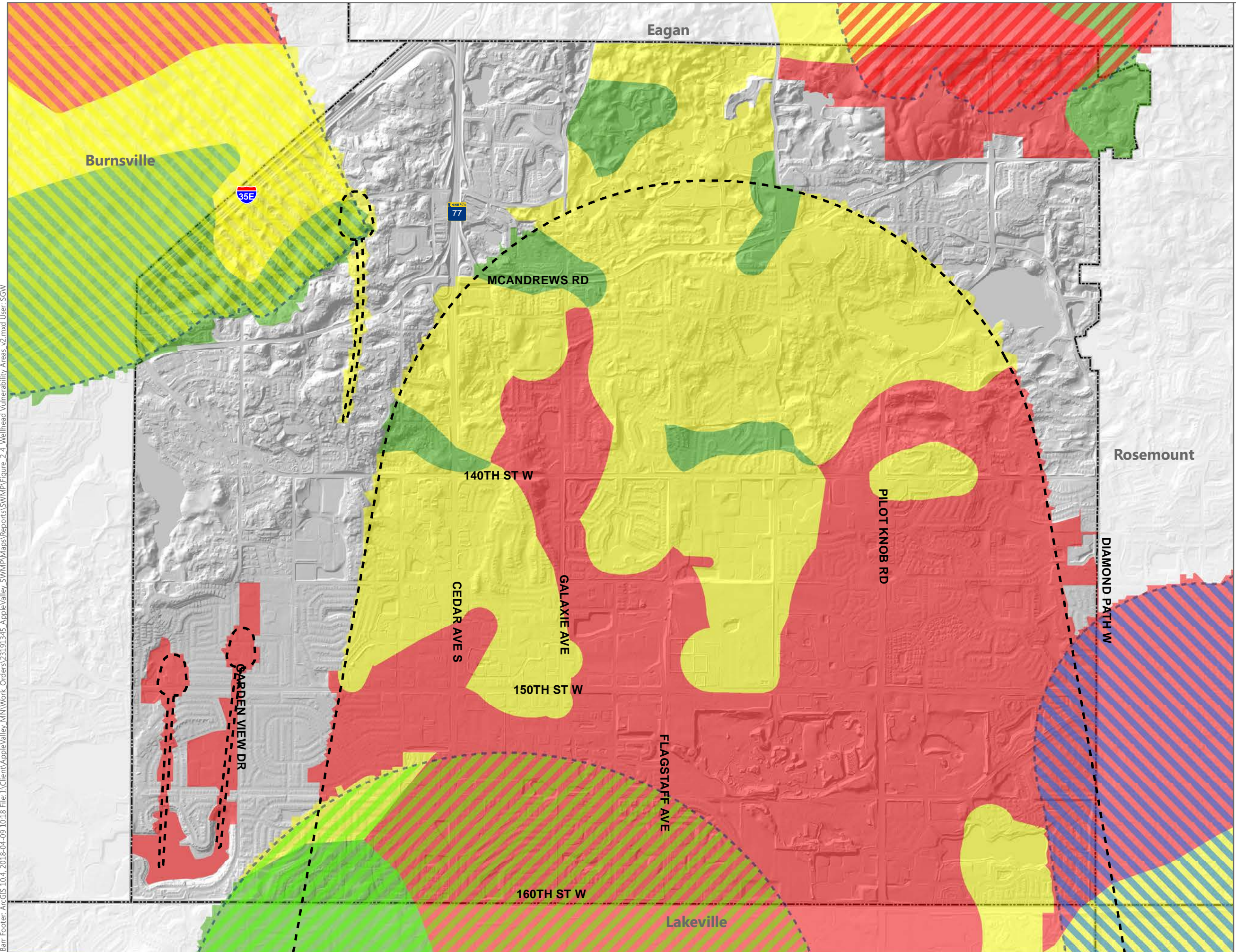


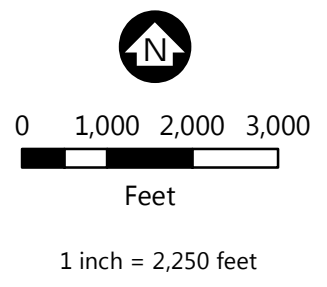
Barr Footer: ArcGIS 10.4, 2018-04-09 10:18 File: I:\Client\AppleValley\_MN\Work\_Orders\23191345\_AppleValley\_SWM\Map\_Reports\SWM\Map\_Reports\2.4\_Wellhead\_Vulnerability\_Areas\_v2.mxd User: SGW



- Municipal Boundary
- Wellhead Protection Areas**
- Apple Valley
- Burnsville
- Eagan South
- Lakeville
- Rosemount

- Drinking Water Supply Management Area Vulnerability**
- High
- Moderate
- Low

Source: Minnesota Department of Health; City of Apple Valley



WELLHEAD VULNERABILITY AREAS  
 SURFACE WATER MANAGEMENT PLAN  
 Apple Valley, MN

FIGURE 2-4